



C13

Wafer Swing Check Valve

Product Description

DENZ-C13 Swing Check Valve is formed with a disc attached to the body, which opens in the direction of flow and closes in the direction of backflow. When it comes to a wafer connection swing check valve, the check valve is installed between the pipe flanges and it is tightened to its place by means of bolts on the pipe flanges.



Application Areas

- Steam
- Hot & Cold Water
- Power & Heat Engineering
- Pressurized Air
- Industrial Technologies

Body & Disc Variations

- Galvanized Steel Body / Galvanized Steel Disc
- Galvanized Steel Body / AISI 304 Disc
- Galvanized Steel Body / AISI 316 Disc
- AISI 304 Body / AISI 304 Disc
- AISI 316 Body / AISI 316 Disc

Sealing Variations

- EPDM
- Silicone
- VITON
- PTFE
- Metal Seated

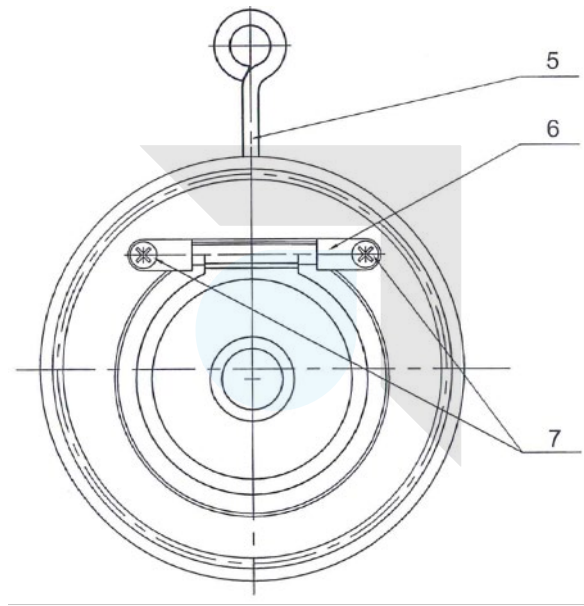
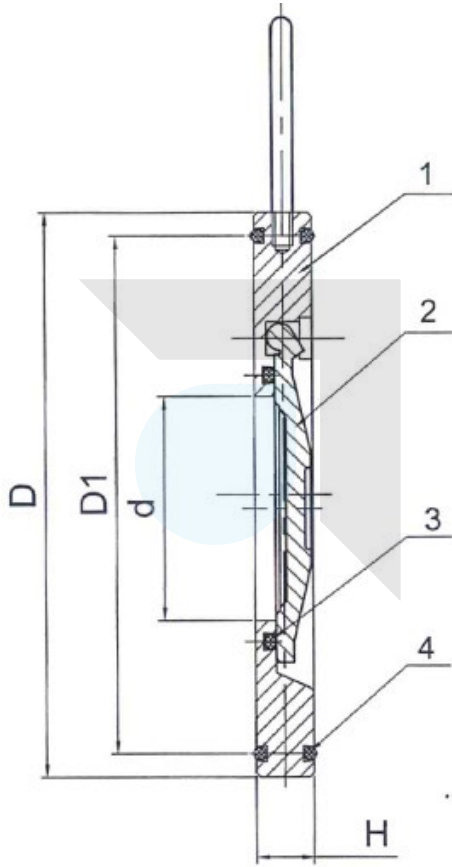
Production References

Size Range	DN100 - DN400
Pressure Range	PN10/16/25
Temperature	EPDM: +80°C NBR: 60°C
Face to face	EN558 Series 48 / DIN 3202 F6
Design	EN 12334 / EN 16767
Connection	Wafer EN1092-2
Testing	EN 12266-1
Marking	EN 19





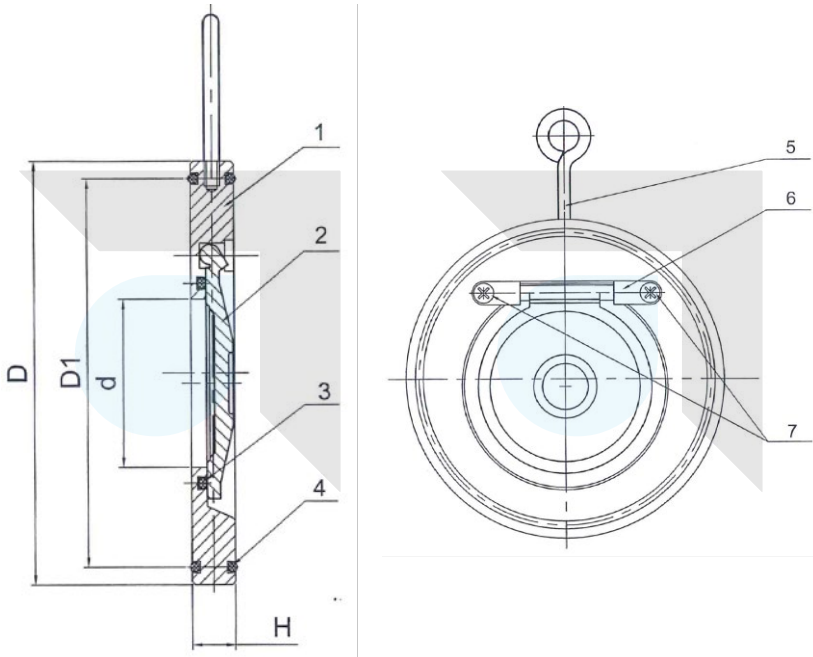
Material List



#	Part	Material
1	Body	Carbon Steel / Stainless Steel AISI 304-316
2	Disc	Carbon Steel / Stainless Steel AISI 304-316
3	O-Ring	EPDM / VITON / PTFE
4	O-Ring	EPDM / VITON / PTFE
5	Hook	Carbon Steel / Stainless Steel AISI 304-316
6	Mil Stoper	SS316
7	Disc Bearing	Stainless Steel AISI 304-316



Dimensions



DN	d	D	D1	H	Kg
mm	mm	mm	mm	mm	
32	20	76	59	12	0,32
40	25	85	68	12	0,52
50	32	105	84	14	0,79
65	40	124	96	14	1,10
80	54	136	117,5	14	1,30
100	70	164	148	18	2,26
125	92	194	166	18	3,15
150	114	220	197	20	4,54
200	154	275	249	22	7,65
250	200	330	310	26	12,63
300	230	380	358	30	19,95

Units: mm / indicative dimensions & weights

